



ANNUAL REPORT

2015-2016



REFLECTIONS FROM OUR CO-FOUNDER AND EXECUTIVE DIRECTOR

This year will be remembered as the year of construction, the building of our new home. The community watched in awe as the hole in the ground led to the foundation, and then came the walls and a roof and all the amazing details to bring together our new home. Cutting the ribbon brought a new chapter to the life of Banyan. We also learned this year that we as people are under construction and that the good work that is started in our lives will come to completion. We understand better that we are moldable individuals that must learn more and reach higher in order to accomplish our goals.

Often times in low income communities, the pressure is to keep low, bury under, lock down, and keep to yourself. Isolation and fear can be at play in a big way with the high crime and low educational outcomes. In the midst of this, there is the Banyan Community. Standing boldly as a group of reconciled people, committed learners, and leading citizens who are future oriented. We celebrate each other and the new reality that we have with Banyan.

Our Annual Report this year is the story of our year—the accomplishments, the emerging leaders, the access to opportunity, and the celebration of community. We are so grateful for the many donors and community members who shared their gifts and talents to bring about a remarkable year. With a strong foundation, we have much to build on. Our future is bright because we are all in this together. A future that



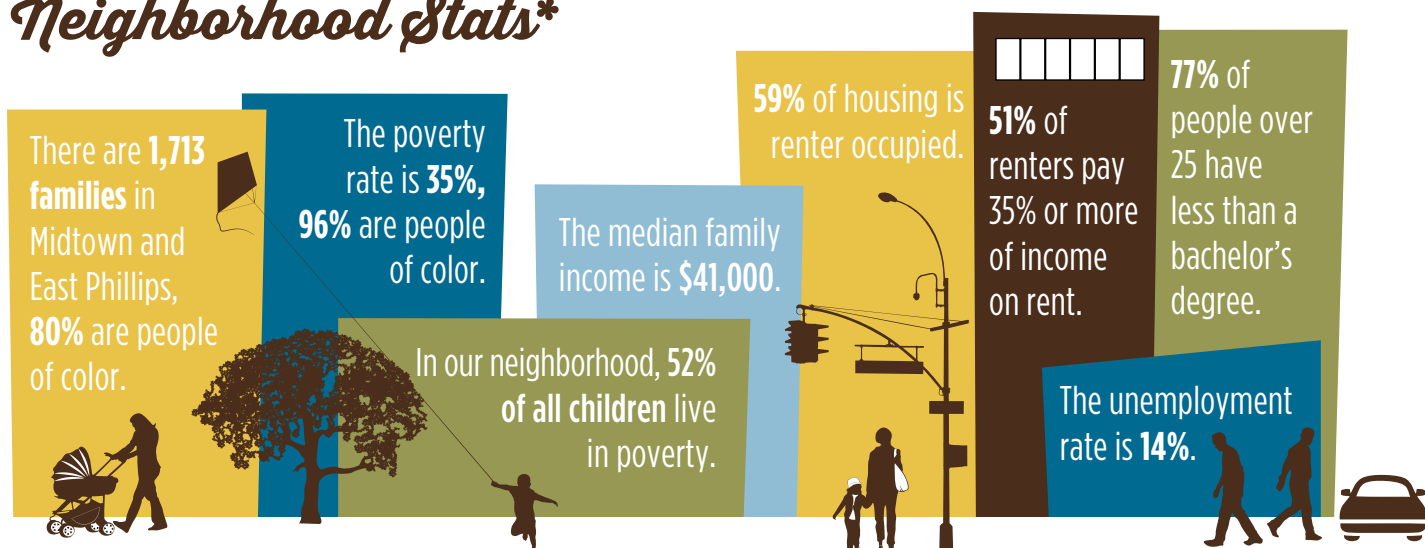
holds youth attending high performing schools and making successful transitions in life, parents being supported and strong advocates, and a community that is cohesive and able to navigate challenges.

Thank you for your support in constructing a beautiful home and a supportive community that creates pathways for success.

"God who began a good work.... will bring it to completion" Philippians 1:6

Blessed,

Neighborhood Stats*



*2010-2014 American Community Survey 5-Year Estimates

NEIGHBORHOOD ROOTS. TRANSFORMED LIVES.

Banyan Community is rooted in the Phillips neighborhood to transform lives by developing youth, strengthening families, and creating community.

OUR 2016 HIGH SCHOOL GRADUATES

Graduation is a milestone a long time in the making at Banyan – and one we celebrate! For over 10 years Banyan youth have been graduating at 100% and enrolling in college!

This graduating class has been together since elementary school and bring the total number of Banyan graduates to 39! These youth join the 25 Banyan Scholars pursuing their post-secondary degrees.

DeLaSalle High School has been a great partner to Banyan in graduating youth and preparing them for college. This year we have 25 Banyan youth at DeLaSalle all working hard to reach the graduation milestone and beat the odds!



HAKEEM SMITH



JANESSA BJORG



REY RIERA



YAJAIRA MARTINEZ



MARISSA MOHAMMED



JHESSICA CHUCHUCA

The City of Minneapolis four-year high school graduation rate is **64%** and drops to **57%** for Latino youth and **52%** for African American youth.* The graduation rate for Banyan youth is **100%**.



*Minneapolis Public Schools 2014-2015

BANYAN PROGRAMS & OUTCOMES



Youth

Banyan inspires young people to invest themselves in education and community. Youth are prepared to meet the challenges of adolescence and adulthood through programs that cultivate social, emotional and educational growth. Our youth have fun while they develop into **Committed Learners** and **Reconciled People**.

YOUTH DEVELOPMENT PROGRAMS:

- **Preschool:** Coming soon!
- **Elementary:** After School, Kids Club and Cool Off Days Summer Program
- **Middle School:** SOAR (Southside Adolescents Rising), Learning Circles and Cool Off Days Summer Program
- **High School:** ASPIRE! Tutoring, Higher Ground Scholarship and High School Employment
- **College:** Banyan Scholars and College Employment

Families

Banyan brings hope to families by strengthening the relationships between parents and children. Our families have close bonds that enable us to work together toward a brighter future. Banyan helps parents become advocates for their children in all arenas of life, while children become an inspiration to their parents. Banyan families are **Future Oriented**, because they see that their future is bright.

FAMILY STRENGTHENING PROGRAMS:

- Family Support
- Goal-Setting Conferences
- Home Visits
- Parent Classes

Community

Banyan connects members of the neighborhood with each other, creating bonds that encourage communication and belonging. Building trust between residents, and training leaders on every block, brings hope and safety to every home. Banyan acts as a “resource hub,” connecting residents with supportive systems and equipping them as **Leading Citizens**.

COMMUNITY CONNECTING PROGRAMS:

- Lighthouse Network (LHN)
- Gathering Events
- Community Council
- Leadership Development





400 home visits this year

Banyan is connected to **3,100** residents through LHN



59 youth attended summer camp through Banyan



96% of youth report they can say 'no' to wrong or dangerous behavior



100% of Lighthouse Network leaders reported positive changes on their block



22 National Night Out parties this year!

86% of Banyan high school youth had a **3.0 GPA** or higher this year

3,000 connections with our Community Coordinator & Family Advocate—linking families to resources



Banyan retained **97%** of our youth & families through the 2015-16 school year



Banyan Youth

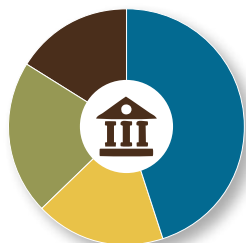
We have **120 youth** and **75 families** in our youth programs.



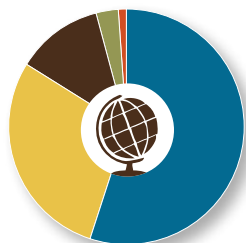
52% Female
48% Male



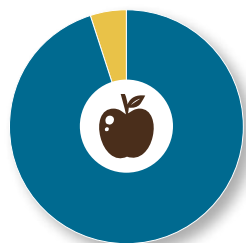
20% K-2nd Grade
23% 3rd-5th Grade
21% 6th-8th Grade
20% 9th-12th Grade
16% College



45% Private School
21% Charter School
18% Public School
16% College



55% Latino
29% African American
12% Other/Mixed Race
3% American Indian
1% Asian



95% Free or
Reduced Lunches

HEY BANYAN!

Banyan hosted a series of events this year to connect with supporters and leverage the expertise of staff members. Education and continuous learning are themes at Banyan and these events were created to pass on topical knowledge, in an informal setting. Topics included Asset Based Community Development, Grit and Resilience, and Collective Efficacy.



Guests enjoyed the opportunity to learn about the concepts and research that make up Banyan's work. Banyan's programs are based on community input and staff expertise, blended with current research on the assets and resources that children need to develop a positive self-image, learn social and life skills, succeed in school, and ultimately overcome the cycle of generational poverty.

Our comprehensive approach includes an intensive and sustained focus on academic preparedness along with the development of other critical assets for youth: life skills, positive self-image, awareness of educational opportunities, family involvement and the support of the community.

All working toward these overall goals:

- Provide opportunities for youth to develop leadership skills, engage in positive relationships with peers and adults, and have new experiences;
- Provide academic support and accountability so that youth can succeed in school and college;
- Create an environment of support around youth, through the encouragement and investment of the adults in the community;
- Strengthen families by connecting them to resources and helping them to avert crisis and navigate change; and,
- Connect neighbors to each other so they can build a strong community.



GROWING UP BANYAN, AND GIVING BACK

Banyan builds leaders, indigenous leaders, from within the community. Asset building is key to creating transformation in a neighborhood. We are blessed that three of our four Program Associates are Banyan alum. They grew up in or next to Banyan and bring a wealth of experience and insider knowledge and culture. Following is an interview with each of them on their experiences and why they made the choice to come work at Banyan.

Abby Mohammed:

“Banyan gave me a deeper meaning of community-working together.”

I started coming to Banyan when I was 5 years old, my three older siblings were already part of Banyan and it was finally my turn! I remember the games we played—‘kick the can’ was my favorite! I guess it is no surprise I am now the PE Specialist.

I love seeing little kids growing up at Banyan and seeing how they benefit from Banyan. When I was a Banyan camp counselor (at Camp Amnicon) this summer, it was really cool to see the kids reflect on Banyan as a place that is safe in the neighborhood, a place that helps them connect to their family, and is family to them.

Banyan has benefitted me both experientially and in my education. With Banyan, I was able to do things that I would not have been able to do as a kid—field trips, water parks, apple picking, etc. I also received a Higher Ground Scholarship from Banyan that allowed me to attend DeLaSalle High School, which paved the way for me to attend St. Kate's. I'll be graduating this spring with a BS in Exercise Sports Science.

Aidee Arocho:

“Banyan is a blessing!”

I started Banyan when I was in 2nd grade in the Banyan House. I was nervous at the beginning but came to love Banyan. I loved being with friends and making crafts and singing in the worship time.

It is awesome giving back to Banyan as an employee. I have a deeper appreciation and better understanding of all that Banyan is. It is holistic, comprehensive, family and community all in one. I remember how the adults and staff in my life helped to shape me- now that is



me! I see myself in several kids here at Banyan—ones that are shy or nervous. I see them grow just like I did, and that is exciting.

This week was so cool when a new kid called me by name to help him with his homework. We worked the problem and he got it! We were both very excited when it worked! We did a fist bump and went on.

Banyan helped to shape who I am. It helped me to understand the importance of school and learning and really helped me develop into a confident person. Those dinners when you have to talk with donors-gives you a sneak peek into the real world; it prepared me.

Greg Johnson:

“I love Banyan. I love making a positive impact in my community.”

I met Mr. and Mrs. Essenburg in their back yard, playing hoops when I was in seventh grade (17 years ago... 1999). Their yard always had a lot of kids in it and they had the best block parties! They are wonderful people that all the kids in the neighborhood look up to.

After high school I went to college in North Dakota to play basketball, got married, and had kids. When I came back to Phillips, my mom was a block club leader with Banyan's Lighthouse Network. Mr. E helped me enroll my kids at Banyan and gave me an application to work in Banyan's gym. As they say, the rest is history!

Now, Banyan is all I think about! I love Banyan. I'm making a positive impact in my community. The other kids I knew growing up are mostly locked up, but not me!

I look forward to going to work, I can't believe I get to work with kids every day and have fun with them.

I love it that my kids are Banyan kids! Our family knows so many more people in the neighborhood and my kids are proud to see me working at Banyan, they have a cool dad!



OUR NEW HOME

At the end of July 2016, as the lease expired on our 6,200 square foot space, staff packed and labeled boxes. Community members arrived and moved Banyan to our new home. This was the third move in Banyan's history, and puts us in our permanent home! Our new home is a prototype, one of a kind 30,000 square foot two story wood frame building, designed specifically to support Banyan's model of community development.

Banyan purchased the parcel of land from the Minneapolis Park Board in early 2013 and has been running a capital campaign (Growing Responsibly) to raise the funds to build the center - debt free. Banyan raised \$6.4 million dollars from generous donors, including community members, and New Market Tax Credit revenue. The accelerated project is completely paid for, built in budget and completed on time!

Thank you to all that made this dream a reality!

"I can't believe this is really happening." - Parent

ADDRESS UPDATE
2529 13th Ave S, Minneapolis MN 55404



Growth is dependent on building Social Capital *and* Financial Capital

The wait is over! We are now able to bring in more youth and families to Banyan. Our waiting list started in 2010, and has had very minimal movement due to a 97% retention rate of youth and families. **We have plans in place to double in size by 2020, reaching a capacity of 250 youth and 150 families.**

In order to reach these goals we must build both social capital and financial capital.

Social capital is the relationships built on trust and shared experiences which assist a person with education, employment, and social mobility and

which permit the group to better address their concerns. Simply put, it is the trust based and reciprocal relationships between people, and the ability of people to act upon that trust in community. We understand that our impact is directly related to our ability to connect and build trust based relationships with adults and youth through staff and community members. Banyan's work depends upon the relationships needed to support youth and families from the inside out.... **we are who we serve and we act in common purpose to develop youth, strengthen families, and create community.**

Our growth is also dependent upon financial capital—our ability to access credit and build sustainable funding sources. Banyan relies solely on the generosity of individuals, foundations, and corporations to support our work. Banyan programs are offered to youth and families at no financial cost, they 'pay' with engagement and participation. Instead, **Banyan depends upon donors and contributors, to stand in the gap and join with Banyan to make an impact in our urban community—one family at a time.**

We have many opportunities for growth – opening a preschool, adult education, more youth programs – but we need to build both the social capital and financial capital to make these a reality.

Junior Supers

Banyan elementary kids monitored the building progress each week and conducted 'inspections' once a month during construction. Meeting with Paul Becker, Superintendent from Frana Companies was a favorite memory of Cartez. "He had cookies and drawings in his trailer office!"

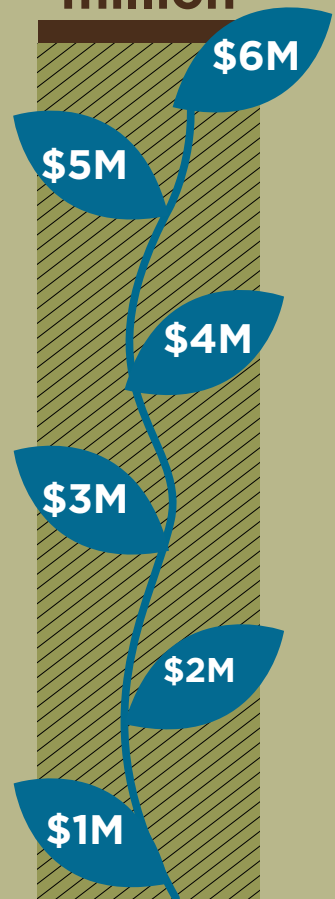
The Junior Superintendents, donned in hard hats and safety vests, did a

great job keeping things in check. There were lots of new experiences - walking through walls, making sand castles on the conference room floor, checking on the gym and learning what it takes to build a building. They even left their "names" hidden away in the wall above the fireplace. It was a great learning experience for all!

Our youth have learned so much about plans, construction, and the variety of equipment needed - hard hats and safety vests were a bonus!



\$6.4
million



TRANSFORMATION AWARD

In 2014, Banyan gave out the first Transformation Award in honor of a supporter whose impact has changed the trajectory of youth and families in the Phillips neighborhood. This year's award winner, Alison Johnson, demonstrates the value of connections and introductions to bringing about transformation.

In the early years of Banyan we quickly realized that our youth were missing the required school supplies that would ensure they could fully engage in the educational process.

It started with 20 backpacks, school supplies and uniforms in August of 1999 that were handed out to all Banyan kids. Alison organized the committee to fill that first order and laid the groundwork to ensure the order was filled every year since. The program became known as School's Cool, and this year delivered over 120 backpacks, school supplies, and uniforms to all Banyan youth!

"One of the simplest, but most influential things, we can do is to make connections. I met the Banyan Community and realized that what they offered and needed were a match with what my home parish needed and could offer."

"Many people credit their education with the creation of meaning and opportunity in their lives. Banyan offers folks the chance to make an important and relevant difference in the lives of young people and their family, passing along the gifts and opportunities they were provided in their lives. This type of connection provides benefit and meaning to both groups."

"My small part was to recognize the importance of the connection, and to reach out my hand to each group, and make the connection."

Her dedication and tireless work on behalf of Banyan youth and families has truly been transformational. What a gift!



WHERE ARE THEY NOW?

Seng Ye graduated from DeLaSalle High School in 2012, and Marquette University in 2016 with a Bachelor of Science in Computer Engineering. He is now working for Revenue Solutions, Inc. at their Implementation Center in Providence, Rhode Island.

Seng Ye is one of five Xiong children that have grown up Banyan. He was in kindergarten when he started at Banyan, in Mrs. E's home. He remembers the move to the Banyan house, and then to the leased church

"Banyan has given me an opportunity that I would have never had."

SENG YE XIONG

building. He can't wait to visit Banyan's permanent home when he is in town.

"Banyan has given me an opportunity that I would have never had. I look at the people who are like me and I compare their lives to mine. I notice that they are either smarter



to better than me in almost every way but because they were never given the opportunity to excel; they stayed the same while being molded by their environment. This is how Banyan has impacted my life and given me an opportunity, for that I am grateful." - Seng Ye Xiong

BUILDING LEADERS

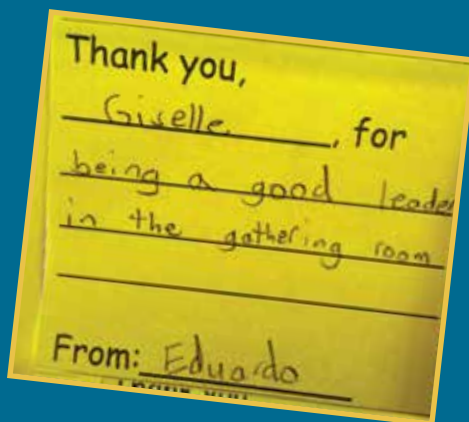
Banyan Community recognizes that in order for people in poverty to thrive and succeed, whole families AND the larger community must be connected. Banyan creates educational pathways for youth to develop leadership skills, engage in positive and meaningful relationships with peers and adults, and broaden their horizons. Likened to a “LinkedIn” social capital network that dissipates the ghetto like situation of poverty in neighborhoods.

This year’s Business Leaders Breakfast was held on a sunny spring day that both inspired and highlighted how together, we can build bridges to 1st generation business leaders. Dr. Bill McGuire shared thoughts on hope, leadership, and the future of soccer in Minnesota. He stressed the importance of education and applauded the results of the work of Banyan. Joani shared how as leaders we are artists, we are way finders, and we are here for a time such as this. She shared many examples of these attributes at work in Banyan every day - ensuring successful outcomes for youth, families, and the community.

We also heard from the youth at Banyan about what leadership means to them: honesty, kindness, integrity, humility, helping others,

and being a good friend. Leaders stand up for others, make good choices, are respectful, encouraging, and good listeners. They care for others, work things out, and are a good example for others.

Banyan is building leaders and the next generation of business leaders every day.



Kid Quotes

“My favorite thing about tonight is the WHOLE night!” —**Banyan youth, after the Banyan Family Celebration**

“Scholar Style helps me focus on what I need to get done.”
—**Kiaree, 2nd grader**

“I love doing homework!!”
—**Angel, Kindergartner**

“It’s ok to ask for help because sometimes you need it!”
—**Eumarion, Kindergartner**



“If you want a job when you grow up, you have to do your homework.”
—**Stephanie, 2nd grader**

“When are we going to do Learning BINGO again?” —**5th grader**

“Kinder Club is my favorite part of the day!” —**Kindergartner**

“We do a lot different things at Banyan. At school we play the same three games in gym class.”
—**Banyan youth**

Response to “Chemist in the Classroom”

Kindergartner: “Chemists kind of look like magicians!”

Staff: “Why do you say that?”

Kindergartner: “Because you can make things that are supposed to break stay together!”

PARTNERS TO PATHWAYS

Banyan Community is blessed with many donors who support our mission year after year. Partners to Pathways celebrate this **tradition of consistent giving**. Every gift makes a difference and allows us to build pathways for the development of youth, the strengthening of families, and the creation of community. Thank you for your tremendous loyalty and support to Banyan Community.



10+ CONSECUTIVE YEARS

Christ Presbyterian Church
June Cicero
Ed and Toni Egan
Martin and Barbara Essenburg
Marty and Deb Essenburg
Tim and Joani Essenburg
Faith Christian Reformed Church
Frey Foundation
Luther I. Replogle Foundation
General Mills Foundation
Kathy Grendahl
Bud Helman
Julie and Jason Hetland
Tom and Regina Hudson
Paul and Terilyn Huntington
Alison and Russell Johnson
Dale and Wilma Johnson
Tom and Margaret Johnson
Arthur and Janet Klem
John and Mary Lindquist
David Ness
Manuel and Maria Ortiz
People in Ministry Care
James and Nancy Plewacki
Kristin and Brent Robbins
Roseville Lutheran Church
Scott and Ellen Sayer
Damian and Rose Topousis
Doug and Michelle VanderVeen

5+ CONSECUTIVE YEARS

Tracy Sterk and Erik Aamoth
Patricia Adkins
Allina Health System
Thomas Archbold and Jacqueline Ivers Archbold
Lesley Bassett
Bell Lumber and Pole Company
Brian and Deborah Benson
Dennis and Londa Bilski
Bob and Sue Burns
John and Tamra Camp
Nancy Cicero
Ralph and Shirley Clare
Edward and Shelly Dau
Tim and Cynthia Davey
Kyle and Denise Didier
Carol Drinkard
Douglas and Willie Eden
Joseph and Anne Egan
Jon Foss
Timothy and Teresa Foster
Janet Frey
Michael J and Karen B Frey
Greg and Kathleen Good
Grain Millers Dairy Products Inc.
Jerome and Diane Grebin
Patricia and Terry Hammink
Richard and Kathleen Hanley
Edwin Hawkins
Steven and Ruth Heath
Virgil and Marlys Hoffman
Brian and Ann Holland

Jay and Susan Jensen
Christopher and Sheila Jones
Tom and Cheri Kamp
Martin and Esther Kellogg
Shirley Kern
Stephen and Deb Klem
Mary Ann Knight
Patrick and Kateri Knight
Gregory and Christine Knopff
The Minneapolis Foundation
Charles and Carolyn Meyer
Lori Lynn Nissen
Tim and Barbara Olson
Christopher Ritchie and Susan O'Malley
Daniel and Kathleen O'Neill
Bob and Janet Orange
Richard and Nancy Peacha
Michael and Sharon Peschel
Neil and Patricia Peterson
Pohlad Family Foundation
Rebecca Kelleher-Reeth and Paul Reeth
John and Ann Rencens
Ronel Robinson
Chico and Tuey Rowland
John and Ann Ryan
The Sayer Charitable Foundation
Kristopher and Georgy Scherer
Steve Imholte and Rachael Scherer
Roger and Angeline Schnobrich

Mark and Ann Schulze
Donnell and Jeanne Schwarz
Susan Schwarze
Kathleen O'Keeffe and Craig Shafer
Dennis and Sarah Showalter
James and Cynthia Smith
Jane Soshnik
Sunrise Banks
Alan and Barbara Tennesen
Dave and Naomi Tetzlaff
Thomson Family Foundation
Tom Thomas
RBC Foundation - USA
Mary Ann Dorsher and Sven Wehrwein
Mark and Sara Welch
Mike and Ann Wilczynski
Jeanne Strauchon and Larry Winship
Daniel and Carol Wolfe
Christine Wolohan

3+ CONSECUTIVE YEARS

Robert and Jeanne Alm
Maria Anderson
Doug and Jenny Anderton
Kevin and Jessica Baas
Doug and Julie Baker
George Barry
Peter Berrie
Timothy Bettenga
Paul and Amy Biewen
James and Judith Brass
Tricia Brownlee
Gregory and Leota Brucker
Carlson Family Foundation
Nancy and James Carrier

Calvary Baptist Church
The Church of St. Edward of Bloomington
Mark and Karri Copman
Cove Foundation
Cronin Family Foundation
Paul Dixon
Mark and Kara Fandrich
David Fettig
Ann Rukavina
Fleming
Geraldine Fleming
Margaret Fling
James and Mary Frey
John and Kari Friel
Mark Gerlach
Araceli Hernandez and Sergio Gomez
Peege Good
Brian Gorecki
Nancy Ann Graf
Mark and Debra Harless
Dan and Amy Hazen
William and Julie Healy
Bob and Betty Helmen
John Hemak
Theresa Huppertz
Matthew and Kelly Kahle
Thomas and Darlene Keeler
Lorne and Erin Kelly-Collins
Ryan and Katherine Kirk
Jack and Jill Kohler
John and Pamela Kovacs
AnnaLisa Krupnick
Robert and Jeanne Leibel
John Frey and Jane Letourneau
Patricia Lieb
Marbrook Foundation
March Family Foundation

James and Julie McEliece
Merry Little Bath Company LLC
Mortenson Family Foundation
Daniel and Bridget Nassif
NC Minerals, LLC
Northern Con - Agg, LLP
Ronald
Hopfensperger and Bonnie O'Connor
Cindy Ohlenkamp
Daniel and Ruth Parten
Bruce and Lucy Peterson-Coles
Brian and Lisa Provost
Marsha Ritt
Josephine Sansone
Fred and Ruth Sauer
Don and Marge Severson
Theresa and Al Shoberg
Sieff Family Foundation
Sherwin and Carolyn Singaas
Louis and Mary Kay Smith Family Foundation
Michael and Barbara Smith
Thomas and Gina Sprenger
Mike and JoAnn St. Aubin
Ryan and Lauren Steel
Ronald and Bonita Strand
Richard J. Stucky
Thomas and Sarah Sutliff
Fr. Michael Tegeder
U.S. Bank Foundation
Watson-Forsberg
Suzanne Winkel
Youthprise

To be included on this listing, donors must have provided financial support each of the last three/five/ten years (ending December 31, 2015). We have made every effort to ensure the accuracy of this publication. If we have omitted, misplaced, or misspelled your name, please accept our apologies and contact us at (612) 722-8512 or info@banyancommunity.org. Your gifts truly make a difference.

Frey Foundation

Banyan first met a member of the Frey Family at a neighborhood Library meeting in 2003. Concerned community members gathered at this meeting to discuss how to save the Franklin Library. The "Friends of Franklin" group succeeded with the help of many generous people, including the Frey Foundation.

It was two years later that Banyan received support from the Frey Foundation in recognition of our work on narrowing the achievement gap. Every year since then, Banyan has partnered with Frey to enhance and strengthen programs that support youth in the Phillips neighborhood graduation from high school and success in college.



Frey Foundation supports organizations that are engaged in promoting self-sufficiency and stimulating creative change in their community. When making funding decisions, they look for organizations with strong leadership and staff. Banyan is proud to meet those standards with a proven record of success with youth and community transformation.

Banyan is proud to have the Frey Foundation as a Partner to Pathways!

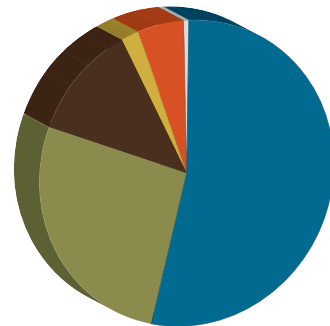


OUR FINANCIALS

2015 FUNDING SOURCES

\$1,015,910

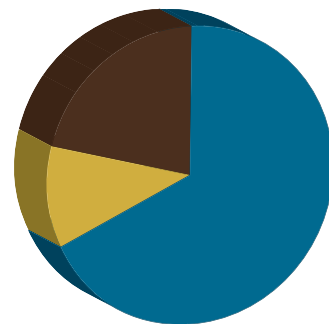
54%	FOUNDATIONS/CORPORATIONS	\$548,551
27%	INDIVIDUALS	\$274,741
12%	SPECIAL EVENTS	\$121,692
2%	CONGREGATIONS	\$17,452
5%	GOVERNMENT	\$49,500
>1%	INTEREST/INVESTMENT	\$3,974



2015 GENERAL OPERATING EXPENSES

\$946,600

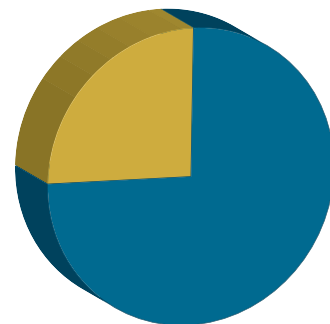
68%	PROGRAM EXPENSES	\$642,644
	- SERVICES	\$490,968
	- SCHOLARSHIPS	\$151,676
21%	FUNDRAISING	\$201,691
11%	MANAGEMENT & GENERAL	\$102,265



2016 BUDGET

\$1,155,000

75%	COMMITTED YTD-3RD Q	\$866,250
25%	NEEDED	\$288,750



2015 STATEMENT OF FINANCIAL POSITION

TOTAL ASSETS	\$7,636,666
TOTAL LIABILITIES	\$7,073,747
TOTAL NET ASSETS	\$562,919
TOTAL LIABILITIES & NET ASSETS	\$7,636,666



THANK YOU TO OUR ANNUAL SUPPORTERS

We are grateful for all gifts received in support of our mission!



Tracy Sterk and Erik Aamoth	Gary and Catherine Brunkow	Tim and Joani Essenburg	Susan Haffield	Theresa Huppertz	Paul and Nancy Kralovec	Robert and Susan McKenzie
Ashley Abbott	Bob and Sue Burns	Mark Ethen	Olivia Haggerty	Rachael Scherer and Steve Imholte	Randall and Jacquelyn Kramer	Joanne Meehl
David and Kathy Abrahamson	Andrew Buss	Alicia Evans	Tricia and Chris Hall	Linda Ireland	Jill and Mike Krance	Ted and Laura Merriam
Patricia Adkins	John and Tamra Camp	Doug and Willie Eden	Jack and Linda Hallberg	Thomas Archbold and Jacqueline Ivers Archbold	Patricia PK Kriha	Charles and Carolyn Meyer
Robert and Jeanne Alm	Frank and Karin Canfield	Patrick and Joan Farley	Patricia and Terry Hammink	Audrey Jarosh	AnnaLisa Krupnick	Mark Miles
Kate Alm	Brian and Jaclyn Carey	Daniel and Katy Farley	Richard and Kathleen Hanley	Jay and Susan Jensen	Courtney Kuehn	Melissa Miller
Alyssa Andersen	Teri Carlisano	Diane Fee	Jonathan Hanson	Tom and Margaret Johnson	Susanne Kueppers	Mark Moeller
David Anderson	Nancy and James Carrier	Allan and Teresa Feltmann	Michelle Hanson	Alison and Russell Johnson	Lisa and Greg LaFrance	Naomi Mohammed
Doug and Jenny Anderton	June Cicero	Andrea Ferstan	Mark and Debra Harless	Christopher Johnson	LaFrance	Michael Morrell
Anonymous (2)	Maricruz Arocho	David Fettig	Robert Harwood	Barbara Johnson	Christopher Lambert	Mary Mulhern
Michael and Doug and Julie Baker	Ralph and Shirley Clare	Rebecca and Mark Fischer	Pam and Kevin Hauer	Bruce Johnson	Ron LaMere	Jamie Nabozny
Terry Banbury	Patricia Clark	Geraldine Fleming	Edwin Hawkins	Donna Johnson	Carol Lansing	Daniel and Bridget Nassif
Ann Bares	Michael and Mary Conklin	Margaret Fling	Dan and Amy Hazen	Gary Johnson	Faith Larson	Rachel Needham
George Barry	Mark and Karri Copman	Peter and Elisabeth Forsman	William and Julie Healy	Christopher and Sheila Jones	Robert and Jeanne Leibel	Jennifer Neidich
Drew Bartholomew	Jeffrey Cotton	Jon Foss	Steven and Ruth Heath	Matthew and Kelly Kahle	Thomas and Patricia Lelich	David Ness
Ralph Bartolotta	Bill Cronin	Timothy and Teresa Foster	Emilie and Michael Heinz	Rachel Kaul	Allen Lemay	Lori Lynn Nissen
Lesley Bassett	Edward and Shelly Dau	Karen Foster	Bob and Betty Helmen	Roy and Stephanie Kay	Mary Jean Lenmark	Cindy Ohlenkamp
Robert and Cindy Bauer	Tim and Cynthia Davey	Alyssa Fox	Bud Helmen	Susan Keiser	Patricia Lieb	Ayo Olawole
Julie Becklund	Stan Devries	Martha Franco	John Hemak	Martin and Esther Kellogg	Barry and Barb Lieske	John and Patricia Oleksa
Nichol Beckstrand	Kyle and Denise Didier	Anne Franz	Michael Henley	Lorne and Erin Kelly-Collins	John and Mary Lindquist	Bonita Eidsmoe
Rick Beeson	Diane Dingley	Michael and Karen Frey	Julie and Jason Hetland	Shirley Kern	Brian Lipschultz	Olin Jessica Olinger
Lely Beitner	Paul Dixon	Eugene and Mary Frey	Catherine Higgins-Whiteside	Renee and Stephen Kessler	Brian Lynch	Tim and Barbara Olson
Michael and Deborah Benedict	Steve Dobin	Richard Frey	Mary Alice Hirsch	Banna Kidane	Earl and Sandra Lyons	Sam and Brandi Olson
Brian and Deborah Benson	Timothy and Kim Donaldson	Clarice Frost	Virgil and Marlys Hoffman	Beverly Kieffer	Susan and John Mack	Christopher Ritchie and Susan O'Malley
Peter Berrie	Dan Dosek	Johanna George	Clifford Hoffman	Ryan and Katherine Kirk	David and Kathleen MacLennan	Daniel and Kathleen O'Neill
Timothy Bettenga	Jim Dowds	Archelle Georgiou	Frank and Laura Hogan	Stephen and Deb Klem	Bob and Shannon Madison	Christine Ong
Paul and Amy Biewen	Carol Drinkard	Mark Gerlach	Ron and Marcia Hoistad	Arthur and Janet Klem	Bob and Shannon Madison	Bob and Janet Orange
Michael and Jacqueline Bilski	Tony Ducklow	Rhonda Gilbraith	Brian and Ann Holland	Patrick and Kateri Knight	Robert Madison, Jr.	Manuel and Maria Ortiz
Dennis and Londa Bilski	Matt and Beth Duffy	Lynn Giovannelli	David Frank and Wendy Holmes	Sarah and Trevor Knight	Tom and Lorene Magne	Mary Ortizcazarin
Sam Black	Erica Dye	Greg and Kathleen Good	Tom and Libby Horner	David and Wendalyn Knight	Matt Marek	Jacob Osterman
Timi Bliss	Joseph and Anne Egan	Peege Good	Kent Howe	David and Mary Ann Knight	David and Jodene Marquis	Daniel and Ruth Parten
James and Judith Brass	Ed and Toni Egan	Thomas Goodmanson	La Donna and Thomas Hoy	Gregory and Christine Knopff	Lisa Marthaler	Angela Pascarella
John and Susan Breon	Ron and Laurie Eibensteiner	Brian Gorecki	Tom and Regina Hudson	Jack and Jill Kohler	Peter and Rhonda McCall	Jimmy Pate
Eric Britt	John and Darlene Eisenmenger	Nancy Ann Graf	Lori and Ron Hume	Martin and Lynn Kooistra	Rosie McCown	Meg Payne
Sandra and Richard Brown	Beth Erickson	Jenele Grassle	Paul and Terilyn Huntington	John and Pamela Kovacs	James and Julie McEliece	Nelson
Tricia Brownlee	Timothy and Jodi Ertmer	Diane Grebin			John and Ann McGuire	Richard and Nancy Peacha
Gregory and Leota Brucker	Martin and Barbara Essenburg	Kathy Grendahl			Todd McIntyre	Jackie Peacha
	Marty and Deb Essenburg	Bobbi Grimm				Amanda Williams and Tony Pellegrin
		Jim and Gail Grunnet				Michael and Sharon Peschel
		William and Aimee Guidera				Neil and Patricia Peterson

This list recognizes gifts that were received from January 1, 2015 - September 30, 2016. We have made every effort to ensure the accuracy of this publication. If we have omitted, misplaced or misspelled your name, please accept our apologies and contact us at (612) 722-8512 or info@banyancommunity.org. Your gifts truly make a difference.

John Peterson
Bruce and Lucy
Peterson-Coles
James and Nancy
Plewacki
Mary Polding
Benjamin and
Jessica Post
LuAnn and David
Prin
Scott and Diane
Provost
Todd and Tamara
Rasmuson
Rebecca Kelleher-
Reeth and Paul
Reeth
Don and Jane
Reierson
Lacey Reierson
John and Ann
Renckens
Sue and Mark
Riesgraf
Marcia and
Robert Rinek
Marsha Ritt
Ruben Rivera
Will Roach

Brent and Kristin
Robbins
Ronel Robinson
Johanna Robles
Tony and Meg
Rodriguez
Michael Rogers
Paul and Janet
Romanowski
Nancee Ronning
Chico and Tuey
Rowland
Ann Rukavina
Fleming
John and Ann Ryan
Douglas and Mary
Sams
Marjorie Sandor
Josephine
Sansone
Fred and Ruth
Sauer
Timothy and
Colleen Sauter
Scott and Ellen
Sayer
Thomas and Aida
Schaefer

Kristopher and
Georgy Scherer
Roger and
Angeline
Schnobrich
Elissa Schufman
Robert and Jill
Schulz
Mark and Ann
Schulze
Katie Schumacher
Russell Sanborn
and Caitlin
Schwartz
Donnell and
Jeanne Schwarz
Susan Schwarze
Don and Marge
Severson
Kathleen O'Keeffe
and Craig Shafer
Dale and Jennifer
Shaltz
Craig Shaver
Vicki Shipley
Theresa and Al
Shoberg
Dennis and Sarah
Showalter

Kristin Siewert
Sherwin and
Carolyn
Singsaas
Aaron and Merrie
Sjogren
Steven F Skoglund
Mike and
Margaret Slawin
Michael and
Barbara Smith
James and
Cynthia Smith
Jane Soshnik
Christopher and
Anita Sperry
Thomas and Gina
Sprenger
Alex Spurrier
Mike and JoAnn
St. Aubin
Jane and Francis
Steck
Ryan and Lauren
Steel
Monica Kocourek
and Lou Stefanich
Sonia Steman

Jason and Amy
Stenman
Frank and Cheryl
Stever
Denise Stibal
Ronald and
Bonita Strand
Steve Strom
Leslye Suarez
John Taylor
Alan and Barbara
Tennessee
Dave and Naomi
Tetzlaff
Craig and Karri
Theis
Bethany
Theobald
Michelle Thiher
Kay A Thomas
Elizabeth
Thornton
Dave Thorson
Susan Throndrud
Mary Kaye Timm
Robert Timperley
Jason Tober
Damian and Rose
Topousis

Denise Toussaint
Alexis Greeves
and David Tynes
Gary and Mary
Vacek
Ray and Janel
VanArragon
Doug and
Michelle
VanderVeen
Ronald and Carol
Vantine
Marc and Mary
Beth Viers
Carin Viertel
Thomas Wagner
Peter Fritz
Waldvogel
Dan Wanous
Alexander and
Amy Ware
Terry Warner
Seth and Alyssa
Warren
William
Waterbury
Mary Ann
Dorsher and
Sven Wehrwein

Jason Weimer
Sue Weiner
Mark and Sara
Welch
Jeff Weness
Mike and Ann
Wilczynski
Suzanne Winkel
Jeanne Strauchon
and Larry
Winship
Garrett Woetzel
Daniel and Carol
Wolfe
Christine
Wolohan
Peter and Tena
Wolterstorff
Amber Wood
Tod and Cari
Worner
Fuxiang Wu
Cher Soua Xiong
Khous Yang and
Dang Xiong
Gary Zweber
Ron Zweber

MEMORIALS/ HONORS

In Memory of Tim Cronin

Steve and Mary
Orfield

In Memory of Raymond Good

Michael Lindsay
and Judee
Arnstein
Joseph Beirne
Peter and Diane
Bilger
Peter and Kay
Carlson
Karan and Larry
Cerf
Grace Dow
Mary Doyle
Frederick and
Kerry Dressen
Scott Drill
Ed and Toni Egan
Michelle Florrey
Maggie Harris
Dan and Amy
Hazen
Mary Alice Hirsch
Robin
Jeersannidhi
Thomas and
Leslie Johnson
Timothy Kuehl
and Mary Ritter
Kuehl
Lisa and Greg
LaFrance
Andrea Lindblad
Tom and Lorene
Magne
Patricia
McNamara

Bruce and Tracy
Mooty
Gerald Nelson
Janet Richard Ost
Michael Palmer
Molly Pittman
Mark and Ann
Schulze
Mamie Segall
Bruce and Janice
Sundberg
Dale & Tina West

In Honor of Jim and Gail Grunnet

Lois Anselment
Will and Nancy
Carroll
Richard
and Diane
Chynoweth
Tim and Joani
Essenburg
Margaret Grunnet
James and
Connie Magoffin
John and Barbara
Schwarz

In Honor of Patricia and Terry Hamink

Lawrence and
Elizabeth Brown
Margaret Callan
Lori Hamink
Thomas and Jean
Hamink
Ronald
Hopfensperger
and Bonnie
O'Connor
Chad and Lucy
Quaintance

In Memory of Marjorie Kuhl

Anonymous
Ralph and Shirley
Clare
Bud Helmen
Karen and Erin
Jennings
Phyllis Pangborn
Jill Peterson
Richard Stucky
Gary Weldon

In Honor of David and Jodene Marquis

Peni Gensler

In Memory of Janet L. Olson

Anonymous (2)
Gregg and Laura
Cullen
Barbara Dacey
Kurt and Mary
Rakos
Mark and Mary
Ulfers

In Memory of Doris Pace

Carol and Steven
Thompson

In Honor of Don and Jane Reierson

Brett Reierson

In Honor of Daniel and Carol Wolfe

John Frey and
Jane Letourneau
James and Mary
Frey

FOUNDATIONS/ CORPORATIONS

Allina Health
System
Anchor Bank
Bethel University
Bremer Bank
C Charles
Jackson
Foundation
Cargill Inc.
Carlson Family
Foundation
Catholic
Community
Foundation
Cove Foundation
Deloitte Services LP
Double Eagle
Foundation
Dougherty
Mortgage LLC
Faegre Baker
Daniels
Frana Companies
Frey Foundation
Fritz, Inc.
General Mills
Foundation
Giving WoMN
Global Traffic
Technologies
Grain Millers Dairy
Products Inc.
Greater Twin Cities
United Way
H.E. and Helen
Warren
Foundation
JNBA Financial
Advisors, Inc.
John & Denise
Graves
Foundation

John E. and Janet
C. Desmond
Foundation
Lockton
Companies
Marbrook
Foundation
March Family
Foundation
Merry Little Bath
Company LLC
Midtown Phillips
Neighborhood
Association
Minnesota
Council on
Economic
Education
Minnesota Office
of Higher
Education
Mortenson Family
Foundation
NC Minerals, LLC
Oakfish
Foundation
People in Ministry
Care
Pohlad Family
Foundation
Rasmussen-
Northeast Bank
Foundation
RBC Foundation-
USA
Shavlik Family
Foundation
Sieff Family
Foundation
Sunrise Banks
TEGNA
Foundation
TelecomPioneers
The Athwin
Foundation

The K Foundation
The Minneapolis
Foundation
The Patch
Foundation
The Sayer Family
Foundation
The Walser
Foundation
Thomas S. Kemp
Foundation, Inc.
Thomson Reuters
ThreeBridge
Timberwolves
Fast Break
Foundation
Toyota Dealer
Match Program
U.S. Bank
Foundation
UBS
UnitedHealth
Group
University of
Minnesota
Extension
Upper Midwest
Chapter of
CMAA
US Bank
Watson-Forsberg
Youthprise

CONGREGATIONS

Calvary Baptist
Church
Christ
Presbyterian
Church
Faith Christian
Reformed
Church
Park Avenue
United
Methodist

Roseville
Lutheran Church
St. Bartholomew
Catholic Faith
Community
The Church of
St. Edward of
Bloomington
Wayzata
Community
Church
Westminster
Presbyterian
Church

MATCHING GIFT COMPANIES

Allina Health
Community
Engagement
AmazonSmile
Foundation
Ameriprise
Financial
Bank of America
Matching Gifts
Best Buy Co., Inc.
DELL
Macy's/
Bloomingtondale's
Medtronic
Foundation
Microsoft
Corporation
Thomson Reuters
Thrivent Financial
US Bank

IN KINDS

Sew Talented
Sherry D.
Heffernan
Welna Hardware
WNAV Audio
Visual

Board of Directors

Brian Provost

Chair

Chairman of the Board,
Delaget Corporation

Sheila Jones

Vice Chair

Sue Jensen

Secretary

Owner, Sew Talented
Embroidery

Dan Farley

Treasurer

Senior Vice President,
The Private Client
Reserve of U.S. Bank

Justin Hanratty

President, USI Insurance

Trevor Knight

Program Manager,
Integrations, Boston
Scientific

Barry Lieske

President, DeLaSalle
High School

Lisa March Mauer

Administrator,
March Family
Foundation

Ayo Olawole

Independent Epic
Consultant
Banyan Alum

Mark Schulze

Partner, SOL Produce

David Tynes

Portfolio Manager,
Specialty Seeds & Oils
Cargill, Inc.

Michael Wilczynski

Assistant Vice President,
Tax and EMEA, General
Tax Counsel
Cargill, Inc

BOARD CHAIR, BRIAN PROVOST

The ribbon is cut and a new era is starting for Banyan Community! After a successful capital campaign and construction project, Banyan's new home is a reality. Banyan is now poised to more than double its outreach and is positioned for scalability for the long term. None of this would have been possible without the generous contributions made by all of Banyan's supporters. Thank you for your trust in the work Banyan is doing.

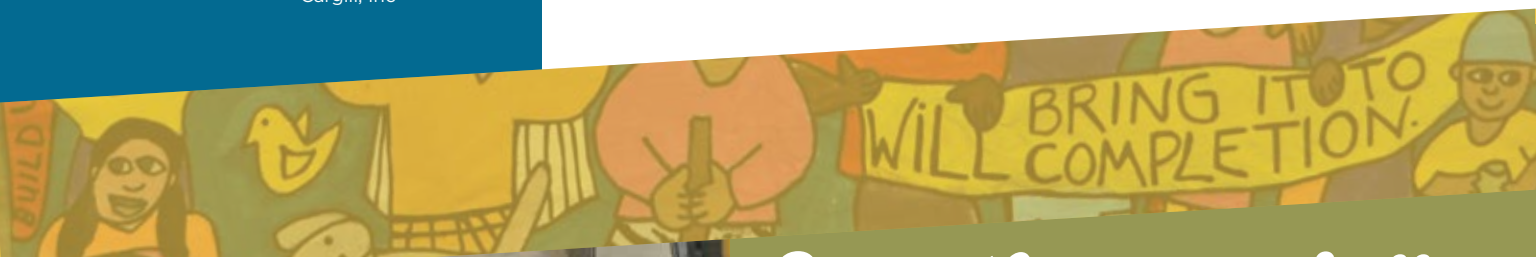
Since its founding in 1998, Banyan has transformed the lives of hundreds of young people and their families. Now Banyan will finally have an opportunity to expand services and introduce more families and children to Banyan.

It is my privilege to serve as Chair on the Banyan Board of Directors. To lead a



committed and talented board and gifted staff and community. I invite you to read all about our success and share it with others.

Brian Provost



Banyan Community Staff

Joani Essenburg

Co-founder & Executive
Director

Sue Riesgraf

Development Director

Sam Olson

Program Director

Susan McKenzie

Operations Director

Katie Kirk

Secondary Program
Manager

Anna Wirth

College and Career
Counselor

Kayla Sloane

Secondary Educator

Santhi Sheehan

AmeriCorps Promise
Fellow | Secondary
Educator

Bethany Theobald

Elementary Program
Manager

Jenny Neidich

Elementary Educator

Naomi Mohammed

Community Coordinator

Maricruz Arocho

Family Advocate

Michelle VanderVeen

Event Coordinator

Abby Mohammed

P.E. Specialist

Aidee Arocho

Program Associate

Greg Johnson

Program Associate

Madeline Bland

Program Associate

Steve Royce

Building and Grounds
Associate

Timi Bliss

Development Associate

Geissell Figueroa

Receptionist

Melisa Belfrey

Receptionist

Imelda Riera

Receptionist

Hany Wahila

Receptionist

STUDENT/SEASONAL

Adult employees (6)
College employees (10)
High School
employees (12)

CONTRACT WORKERS

Tim Dornfeld

Accountant

Rachel Kaul

Grant Writer
Kaul Consulting

Banyan is a fig tree with a large center trunk. Long branches send out roots which grow downward and form new trunks that create a grove of trees. This is our vision—a vibrant and connected urban neighborhood with roots and transformed lives!

2529 13th Ave. S | Minneapolis, MN 55404
www.banyancommunity.org | 612.722.8512